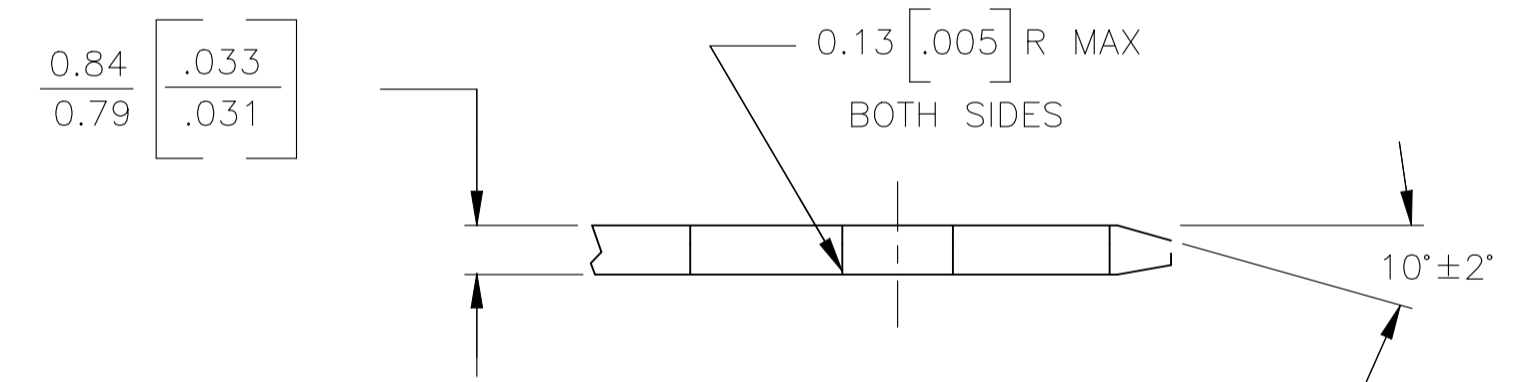
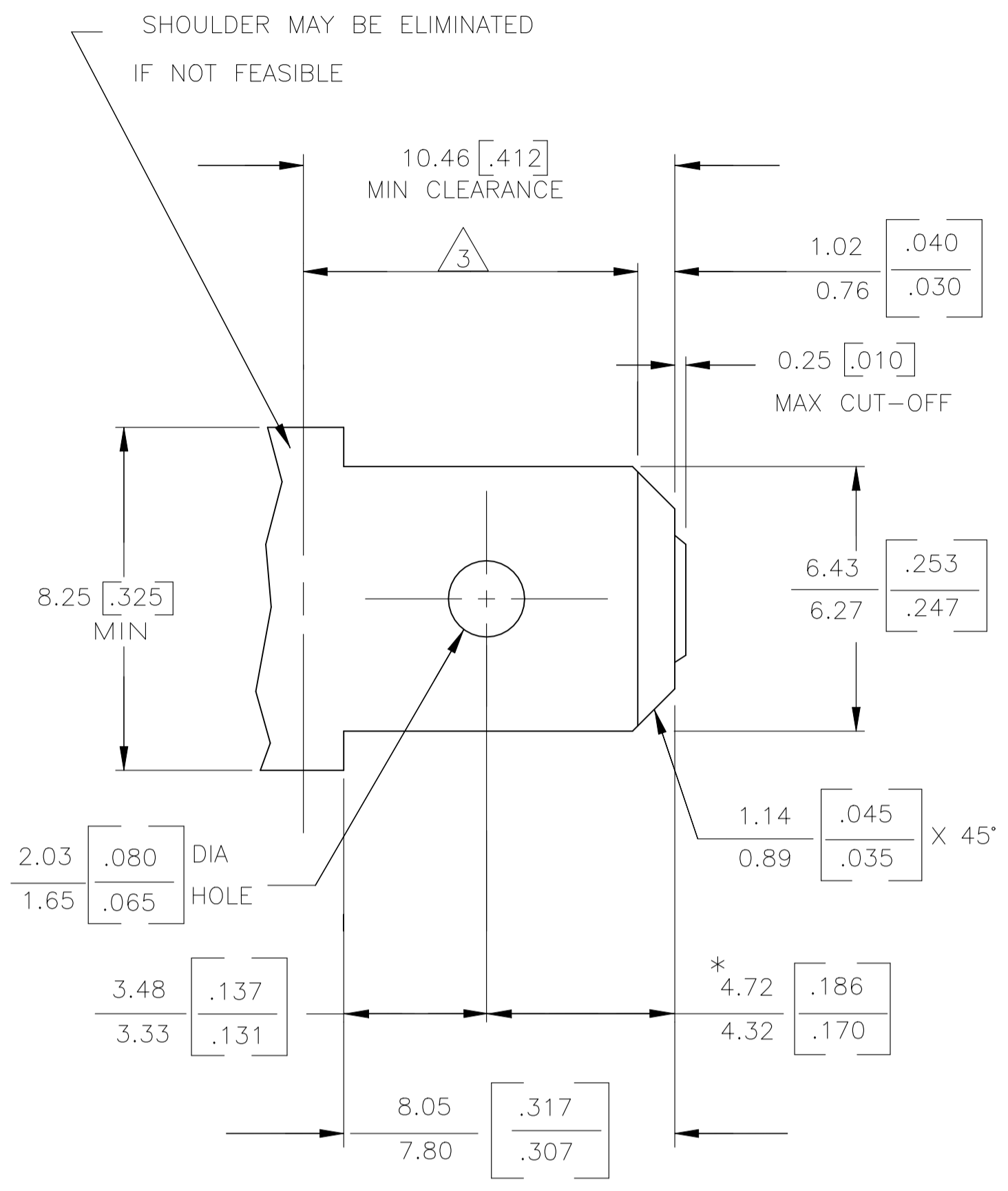
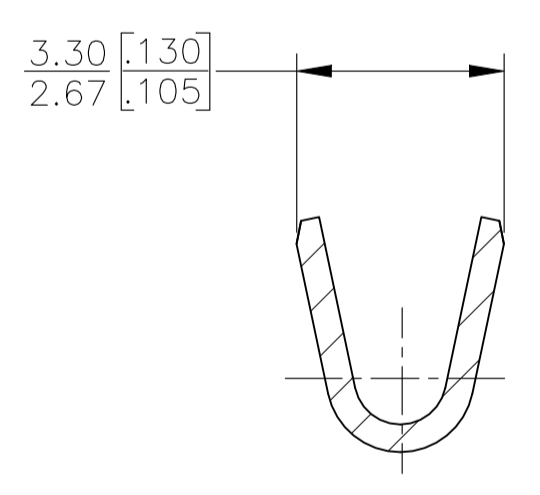
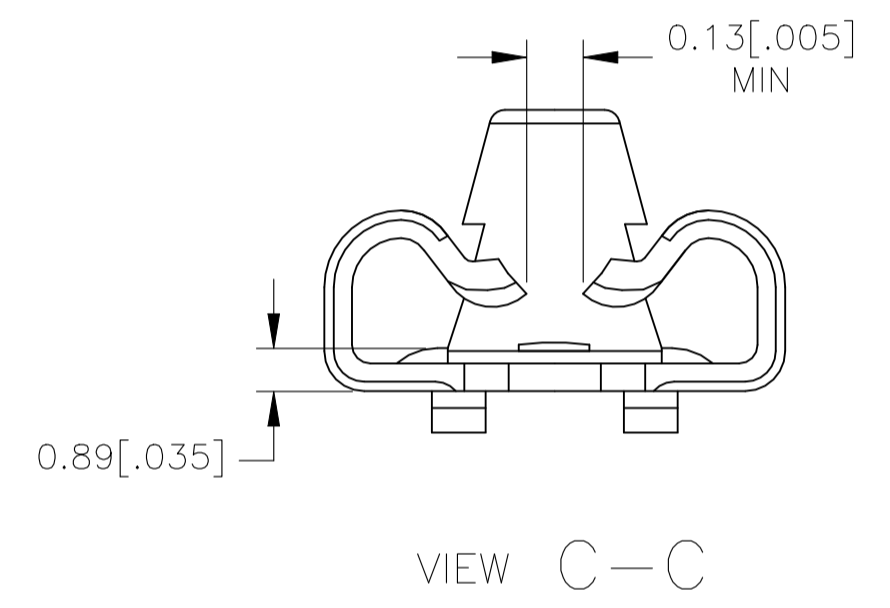
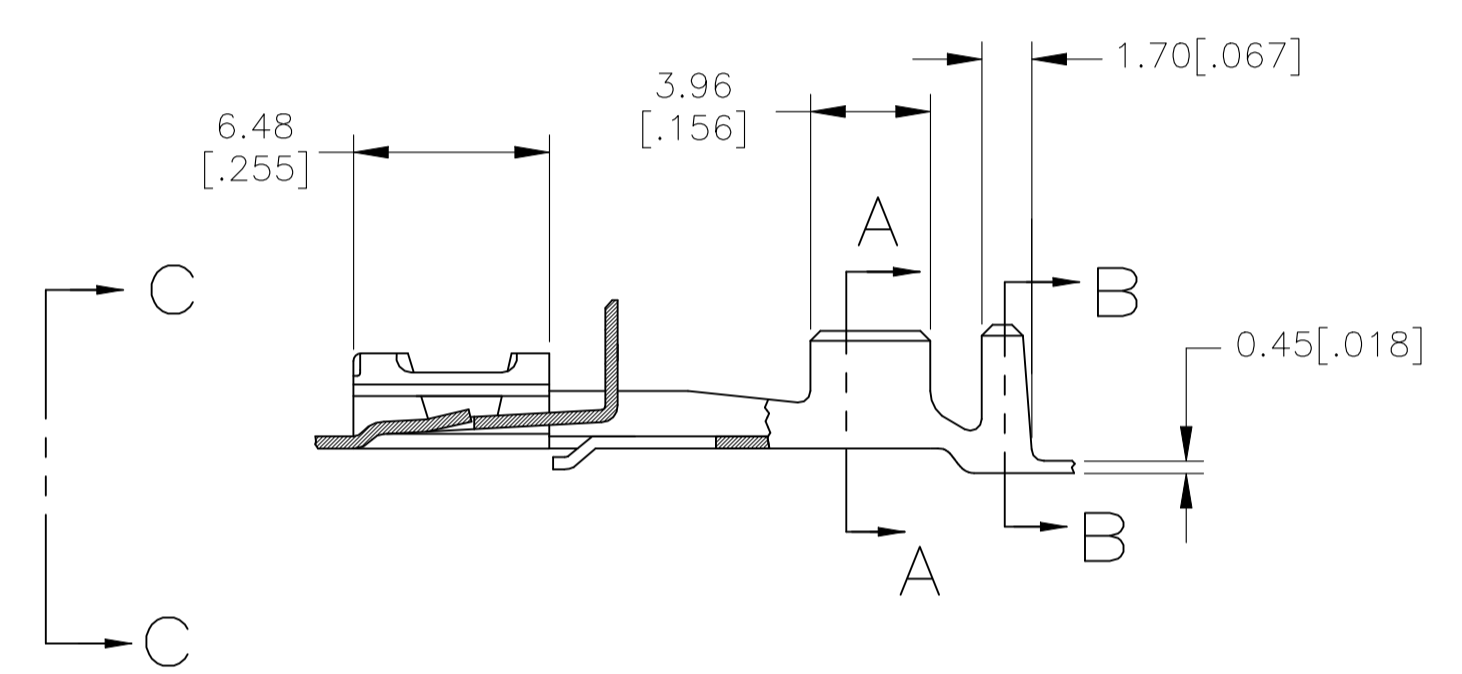
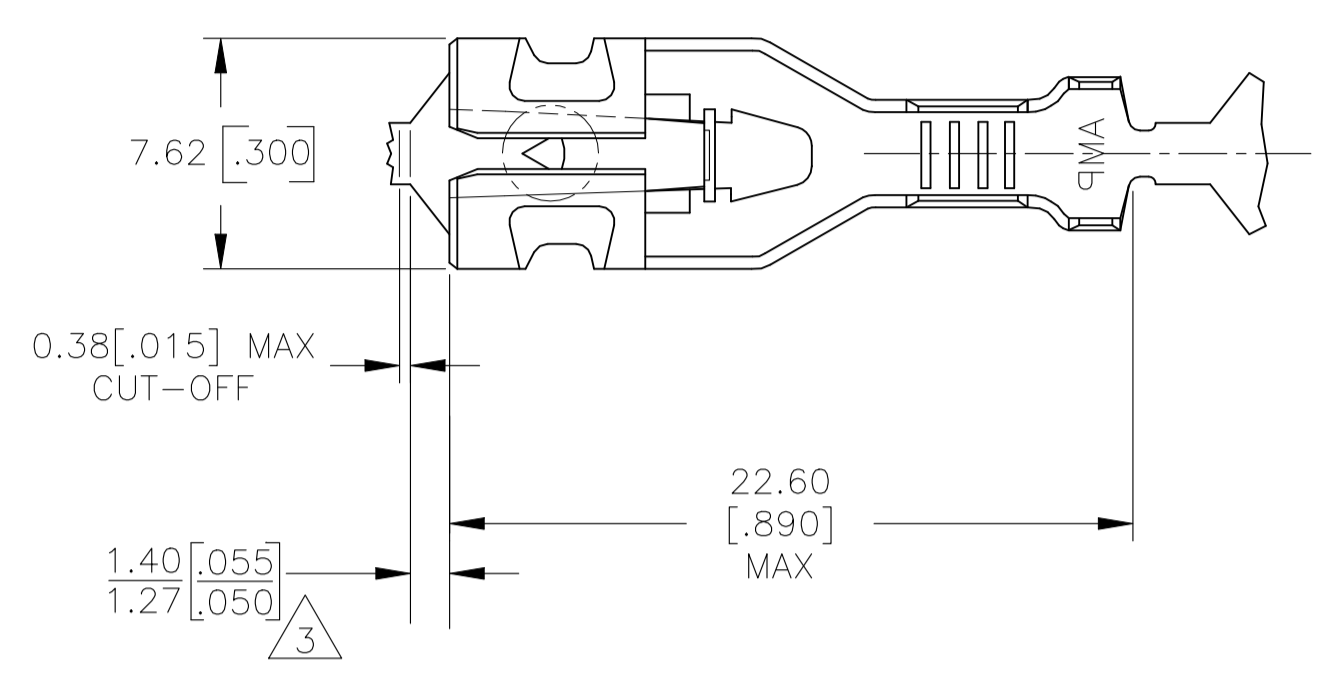


| REVISIONS | | | | |
|-----------|-----------|---------------------------|----|-------|
| REV | DATE | DESCRIPTION | BY | APP'D |
| A2 | 25AUG2022 | REVISED PER ECR-22-150015 | VA | EMS |

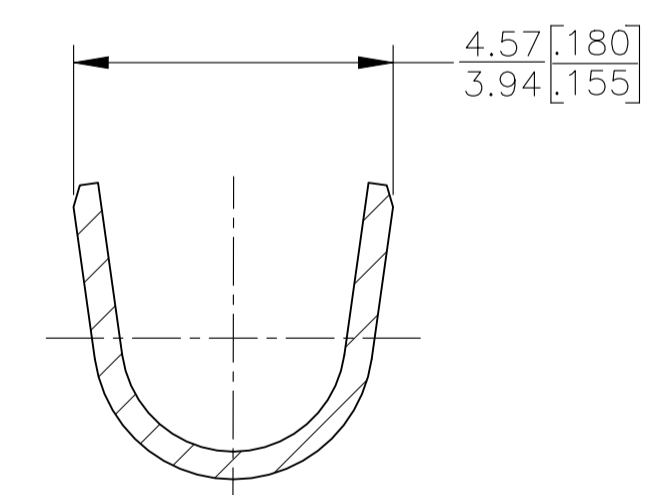
SUGGESTED MATING TAB



- MATL: 1/2 H BRASS OR NICKEL PL STEEL.
 - NO BURRS PERMISSIBLE AT HOLE.
 - MUST BE FLAT WITHIN 0.076 [.003] OVER THIS LENGTH.
 - TIN PLATING IS REQUIRED ON BRASS WHEN TERMINAL TEMP. IS OVER 225°F
 - HOLE MUST BE SYMMETRICAL ABOUT TAB Q_L WITHIN 0.076 [.003]
- * TO BE USED ONLY WHEN SHOULDER IS ELIMINATED.



SECTION A-A
SCALE 8:1



SECTION B-B
SCALE 8:1

- DIMENSIONS IN BRACKETS ARE IN INCHES.
- PRODUCT PROVIDED IN STRIP FORM, BREAKS MAY BE PRESENT.
- THE 1.40 [.055] / 1.27 [.050] DIMENSION MUST BE MAINTAINED BY THE APPLICATOR CUT-OFF TO ENSURE THE PROPER LOCKING FUNCTION OF THE RECEPTACLE.

| | | | | |
|---|----------|--|-------------|-------------|
| NICKEL PLATE | STEEL | 1.52-2.54 [.060-.100] DIA | #22-#18 AWG | 2238139-1 |
| FINISH | MATERIAL | INSULATION RANGE | WIRE SIZE | PART NUMBER |
| THIS DRAWING IS A CONTROLLED DOCUMENT. | | DIN: RASVESH WARAD 25NOV2016 CHK: MIKE DIDONATO 25NOV2016 AP'D: MIKE DIDONATO 25NOV2016 NAME: RECPT, POSITIVE LOCK, .250 SERIES | | |
| DIMENSIONS: mm(INCHES) TOLERANCES UNLESS OTHERWISE SPECIFIED: 0. PLC ± - 1. PLC ± - 2. PLC ± - 3. PLC ± 0.25(.010) 4. PLC ANGLES ± 1° | | PRODUCT SPEC: 108-143022 APPLICATION SPEC: 114-2074 WEIGHT: 0 CUSTOMER DRAWING | | |
| MATERIAL: - | | SIZE: A1 CAGE CODE: 00779 DRAWING NO: 2238139 SCALE: 4:1 SHEET: 1 of 1 REV: A2 | | |