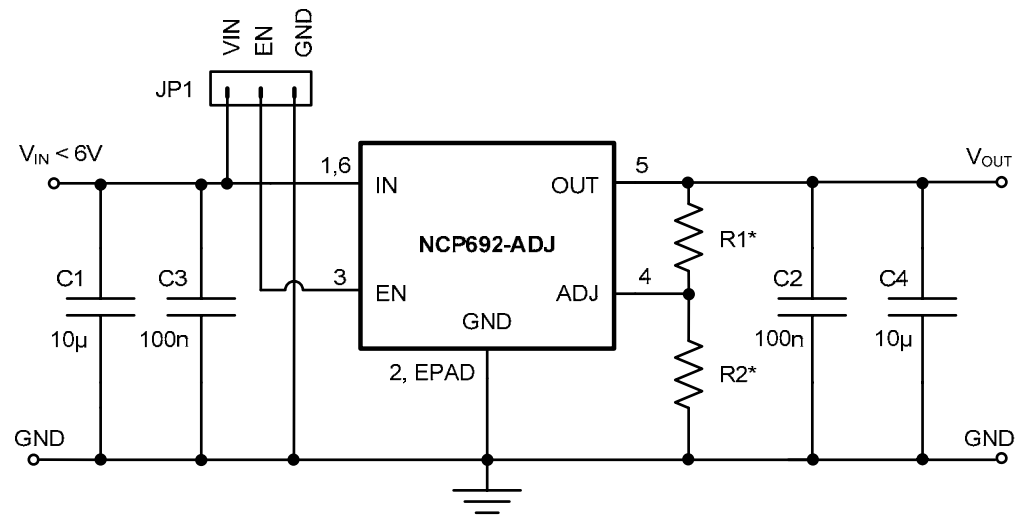


Schematic for the NCP692, 1A, Adjustable Output Voltage LDO Demonstration Board

ON Semiconductor®



06-MAY-09



* R1, R2 – Please choose proper values for required output voltage option

To calculate the values of R1, R2 for chosen V_{OUT} please use the following equation: $V_{OUT}=1.25(1+R1/R2)$

NCP692, 1A, Adjustable Output Voltage LDO Schematic View

06-MAY-09

Page 1 of 2

www.onsemi.com

Schematic for the NCP692, 1A, Adjustable Output Voltage LDO Demonstration Board

ON Semiconductor®



The table below shows the example values of R1, R2 resistors for some typical Output Voltages:

Desired Output Voltage [V]	Feedback Resistors		Set Output Voltage [V]	Output Voltage Error [mV]	Resistor Divider Current I_{DIV} [μ A]
	R1 [k Ω]	R2 [k Ω]			
1.50	2	10	1.5000	0	125
1.80	1.6	3.6	1.8055	+ 5.5	347
2.50	9.1	9.1	2.5000	0	137
2.70	3.9	3.3	2.7300	+ 27.3	378
3.30	15	9.1	3.3104	+ 10.4	137
3.60	6.8	3.6	3.6111	+ 11.1	347
5.00	30	10	5.0000	0	125

Please also note that the feedback resistors should be chosen to satisfy the minimum output current requirement, which is 100 μ A.