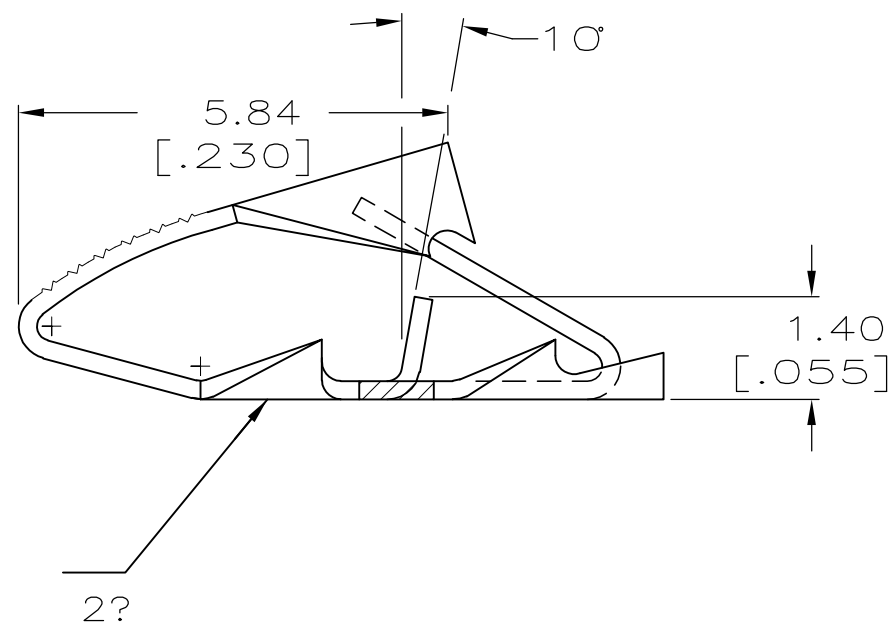
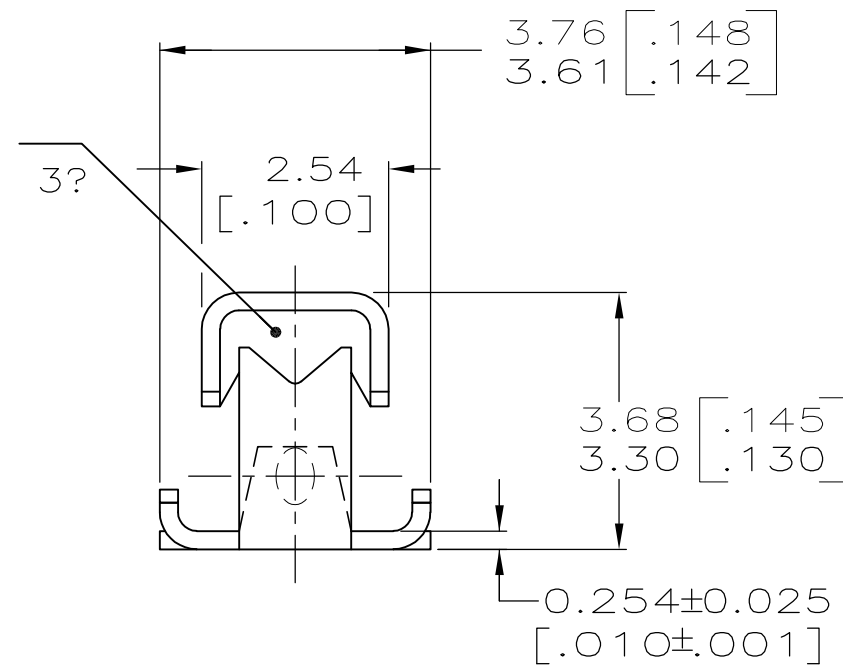
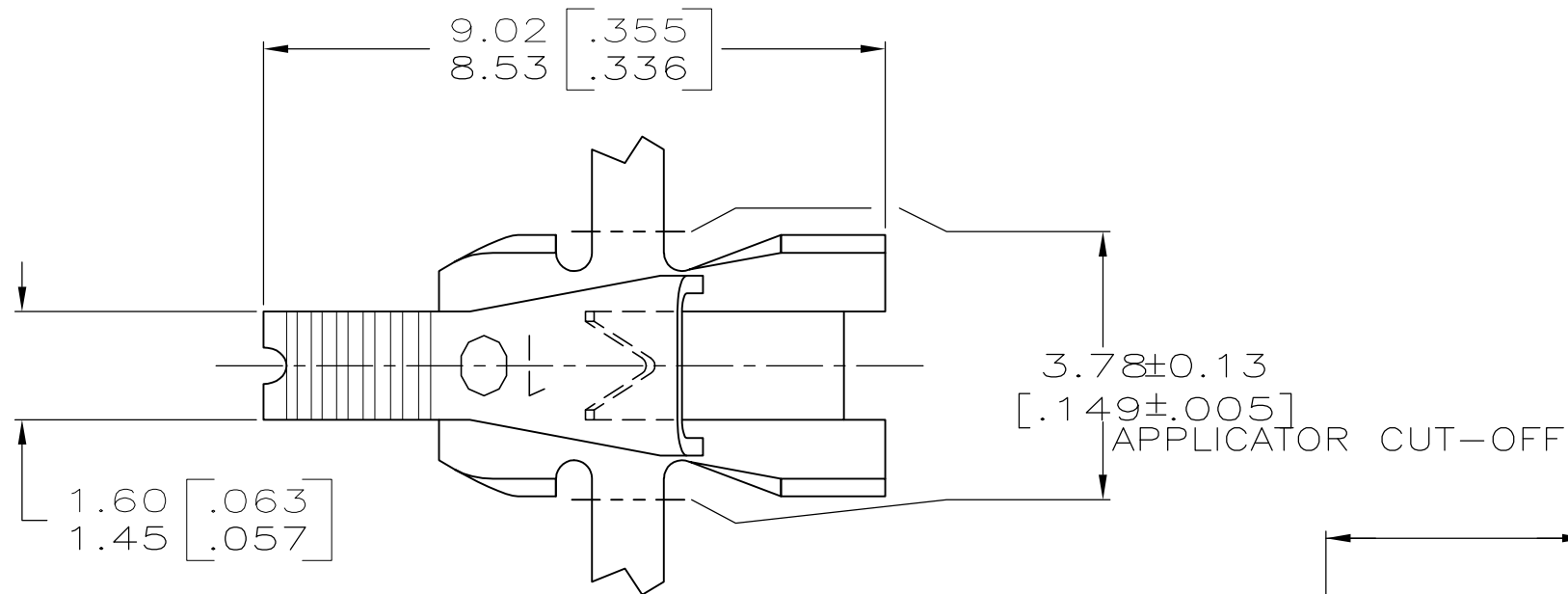


THIS DRAWING IS UNPUBLISHED. RELEASED FOR PUBLICATION ,19  
 © COPYRIGHT 19 BY AMP INCORPORATED. ALL INTERNATIONAL RIGHTS RESERVED.

LOC	DIST	P	F	REVISIONS				
				ZONE	LTR	DESCRIPTION	DATE	APPD
AF	50				N	ECR-13-008483	08AUG13	CX/DZ




- 1 CONTINUOUS STRIP ON REELS WITH TERMINALS LOCATED ON 6.10 [.240] CENTERS.
- 2? IDENTIFICATION NUMBER (10) FOR MAGNET WIRE RANGE.
- 3? SOLID OR FUSED STRANDED LEAD WIRE 0.3-0.9mm<sup>2</sup> [#22-#18] AWG.

0.05-0.13mm [#44-#36] AWG

62780-1

COPPER MAGNET WIRE RANGE

PART NUMBER

DO NOT SCALE PRINT. UNLESS SPECIFIED DIMENSIONS IN mm [INCHES] TOLERANCES ON: 2 PLC DEC ± - 3 PLC DEC ± 0.25 [.010] ANGLES ± -	DR 9/27/89 MICHAEL S. FEHER	 AMP INCORPORATED Harrisburg, Pa. 17105
	CHK 10/12/89 JEFF R. RUTH	
APPD 10/12/89 NELSON E. NEFF		
APPD 10/12/89 TERRY L. SHUTTER		
PRODUCT SPEC -		
MATERIAL H02 HARD BRASS	APPLICATION SPEC 114-2047	NAME TERMINAL, POKE-IN, MINI MAG-MATE™
FINISH TIN PLATE	WEIGHT -	SIZE <b>B</b>

CAGE CODE 00779		DRAWING NO 62780
SCALE 10:1	SHEET 1 OF 1	

