

4

3

2

1

THIS DRAWING IS UNPUBLISHED.

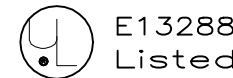
RELEASED FOR PUBLICATION

© COPYRIGHT - TE Connectivity Ltd.

ALL RIGHTS RESERVED.

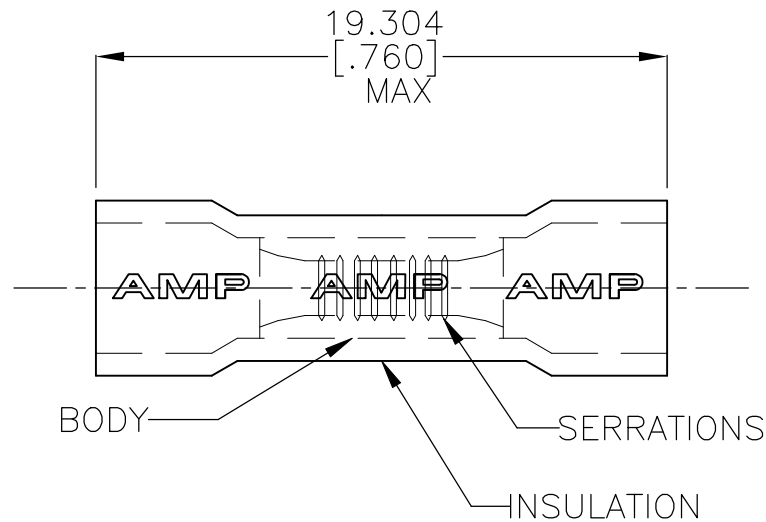
REVISIONS

P	LTR	DESCRIPTION	DATE	DWN	APVD
	D	REDRAWN PER 0G3A-0550-03	05SEP03	JR	TM
	D1	REVISED PER ECO-17-014338	14MAY2018	RS	DR



22-16
SOLID OR STRANDED

22-16
SOLID OR STRANDED



1 FOR 2.667[.105] TO 3.556[.140] WIRE INSULATION DIA.

1000	LOOSE PIECE	INSULATION: PVC COLOR: RED BODY: COPPER ASTM B152 TIN PLATE PER ASTM B-545	34132
QTY	PACKAGE TYPE	MATERIAL / FINISH	PART NO

AMP INCORPORATED
CUSTOMER SERVICE SYSTEMS

THIS DRAWING IS A CONTROLLED DOCUMENT.

DWN jr_ruth 05SEP03

CHK T MICHELUTTI 05SEP03

APVD T MICHELUTTI 05SEP03

PRODUCT SPEC

UL486C

APPLICATION SPEC

114-2161

WEIGHT

CUSTOMER DRAWING



NAME

WIRE SPLICE, PARALLEL,
PLASTI-GRIP, WIRE SIZE: 22-16 AWG

SIZE CAGE CODE DRAWING NO RESTRICTED TO

A3 00779 C-34132

SCALE 4:1 SHEET 1 of 1 REV D1

FOR ADDITIONAL
PRODUCT INFORMATION OR
COPIES OF DRAWINGS
AND TECHNICAL DOCUMENTS

PRODUCT INFORMATION CENTER
1-800-522-6752

FOR APPLICATION

TOOLING ASSISTANCE CENTER

TOOLING INFORMATION

1-800-722-1111

FOR ORDER ENTRY

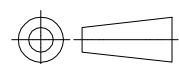
1-800-526-5142

MAX RECOMMENDED OPERATING
TEMPERATURE:
105°C [221°F] MAX

VOLTAGE RATING:
600V
[1000V SIGNS OR FIXTURES]

CIRCULAR MIL AREA:
0.26-1.65mm²[509-3,260]
SOLID OR STRANDED

DIMENSIONS:
mm [INCHES]



MATERIAL
SEE TABLE

TOLERANCES UNLESS
OTHERWISE SPECIFIED:

0 PLC	± -
1 PLC	± -
2 PLC	± -
3 PLC	± 0.127[.005]
4 PLC	± -
ANGLES	± 1°

FINISH
SEE TABLE