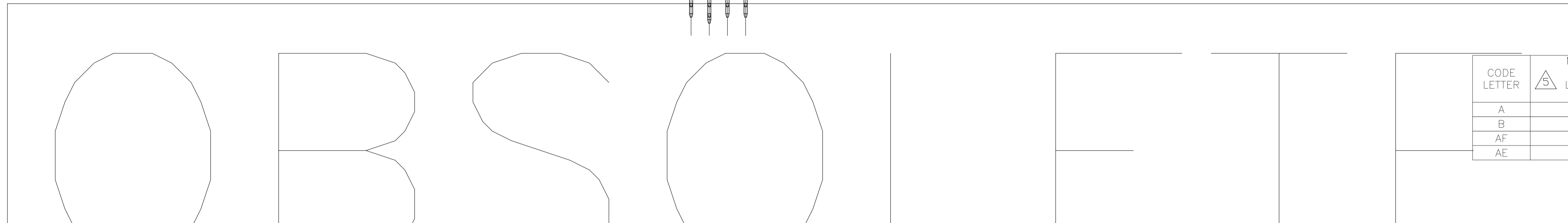
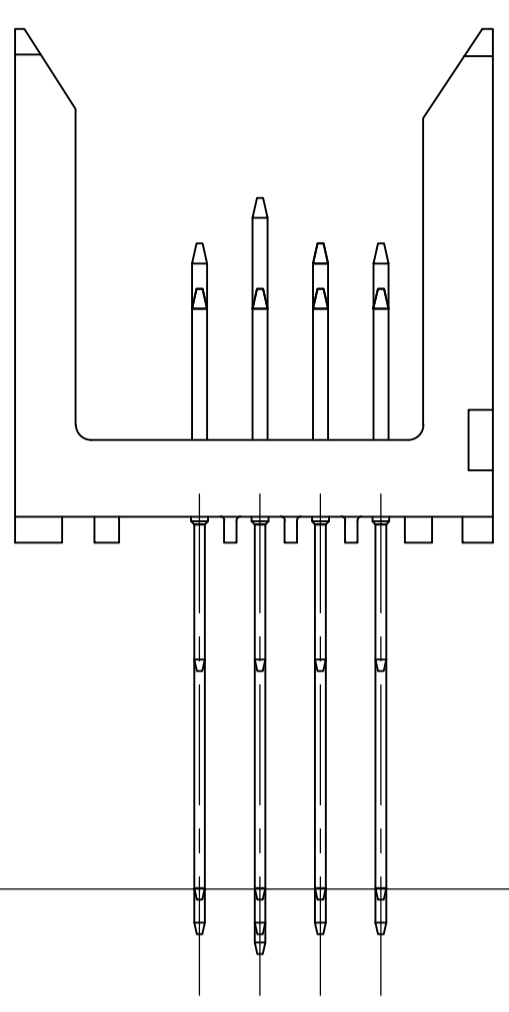


REVISIONS				
P	LTR	DESCRIPTION	DATE	OWN APVD
C		RELEASED PER ECO-18-019752	18DEC2018	DS HL

- ① HOUSING MATERIAL: LIQUID CRYSTAL POLYMER PER ASTM DS138 LCP000 G30A 32250, COLOR: NATURAL.
- ② CONTACT MATERIAL: PHOSPHOR BRONZE.
- ③ CONTACT FINISH:
 UNDERPLATE (ENTIRE CONTACT):
 0.00127 MIN NICKEL
 ON MATING SURFACES:
 CONFORMS TO ALL TESTING SPECIFIED FOR TELCORDIA UNCONTROLLED ENVIRONMENT.
 ON LEADS:
 0.0006 MIN MATTE TIN OVER UNDERPLATE.
 LUBRICATION (MIN MATING SURFACES):
 SURFACE CONDITIONER AFTER PLATING.
- ④ PART MARKING, LOCATED APPROXIMATELY AS SHOWN.
- ⑤ DIMENSION APPLIES WHEN SEATED ON PRINTED CIRCUIT BOARD.



CODE LETTER	MATING POST LENGTH ±0.10	LEAD LENGTH REF
A	5	4.25
B	5	11.8
AF	6.5	12.95
AE	8	13.6

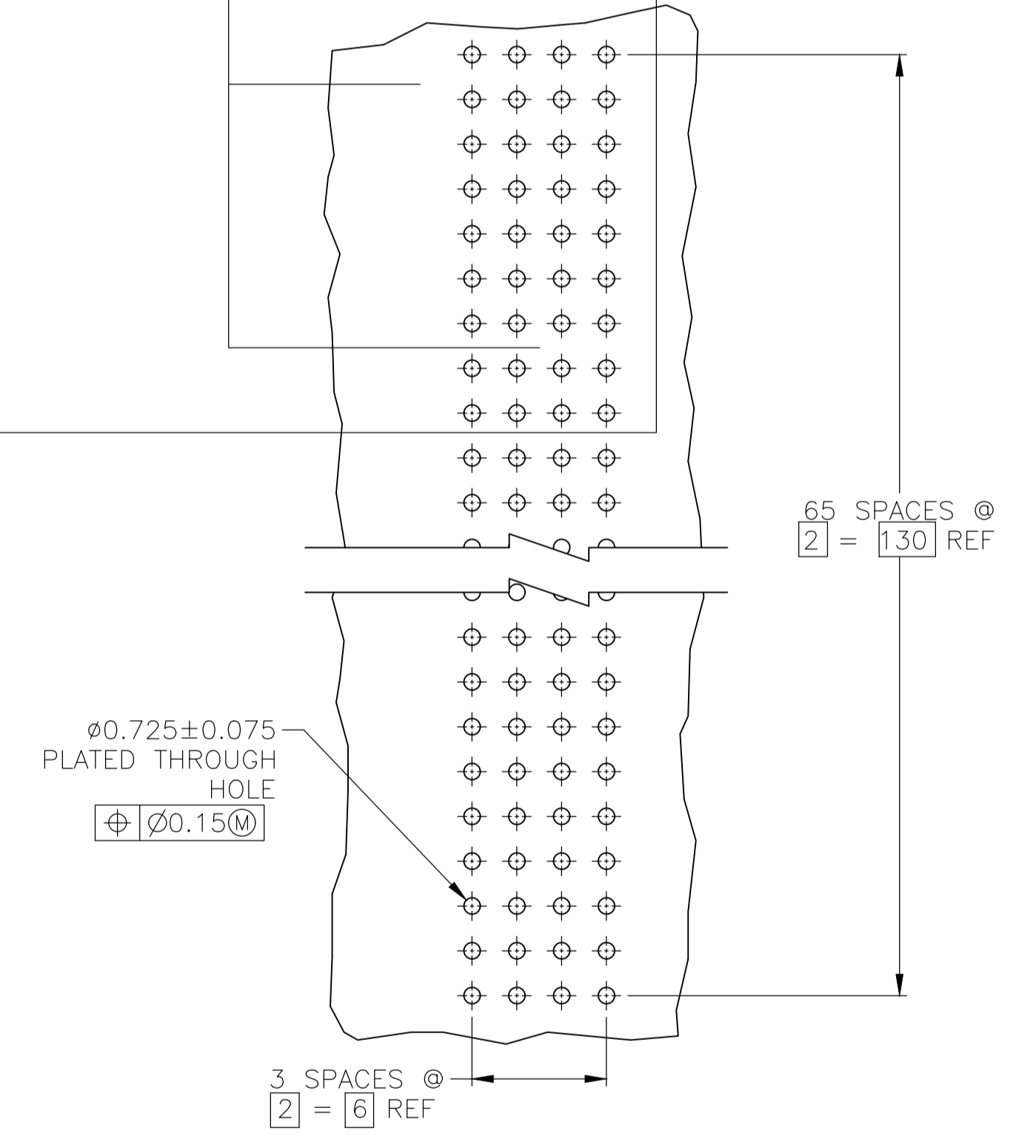
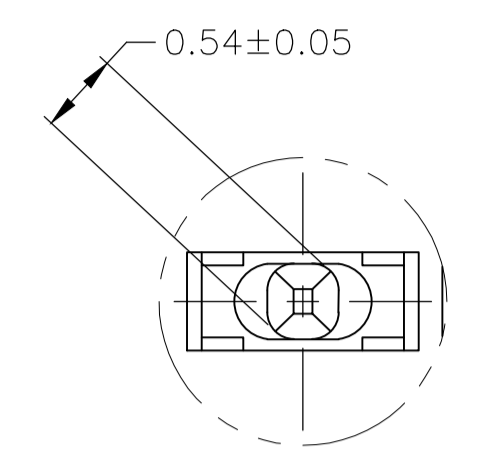
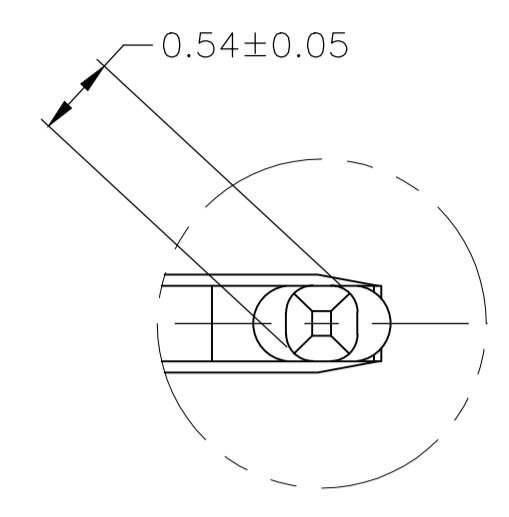
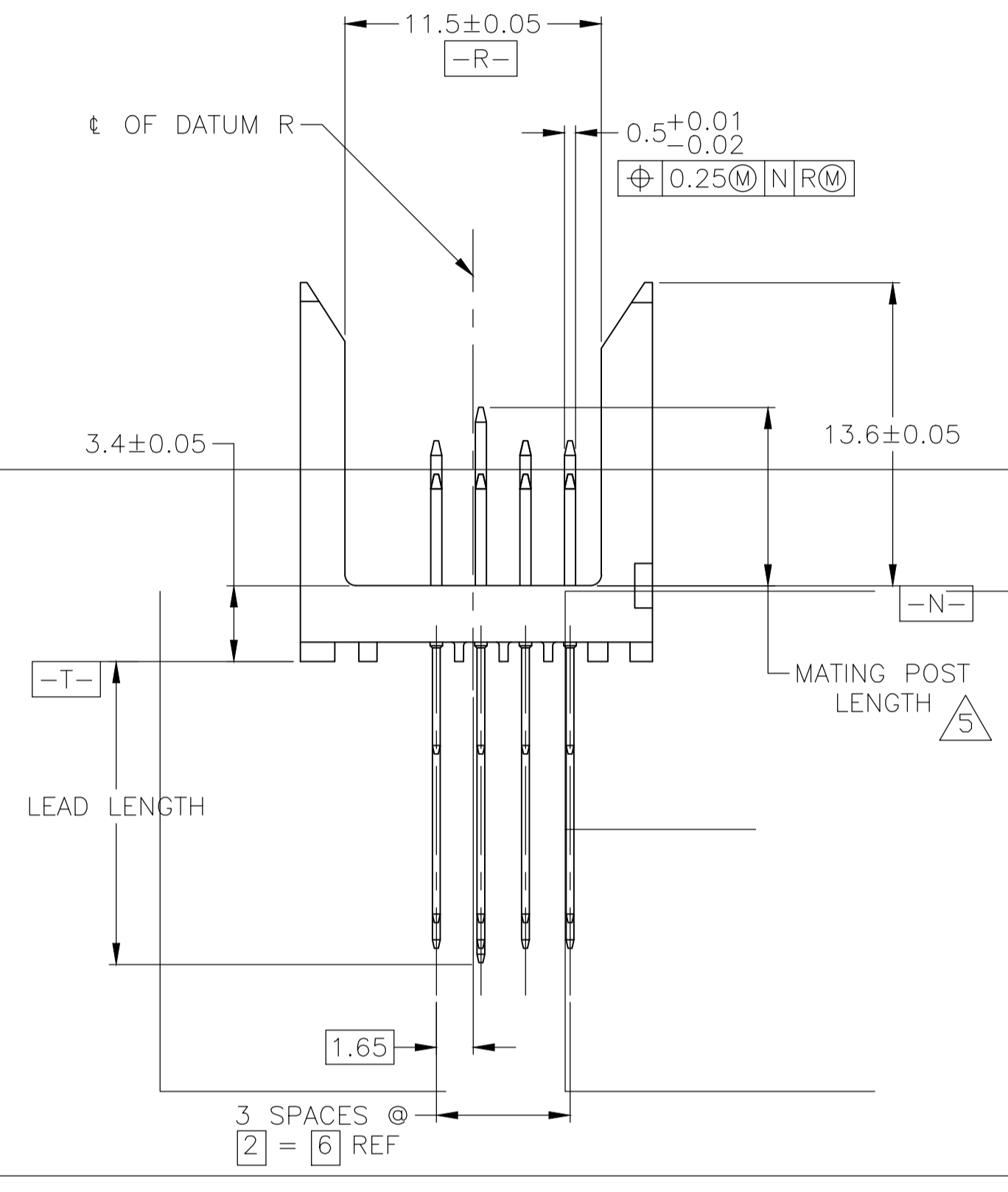
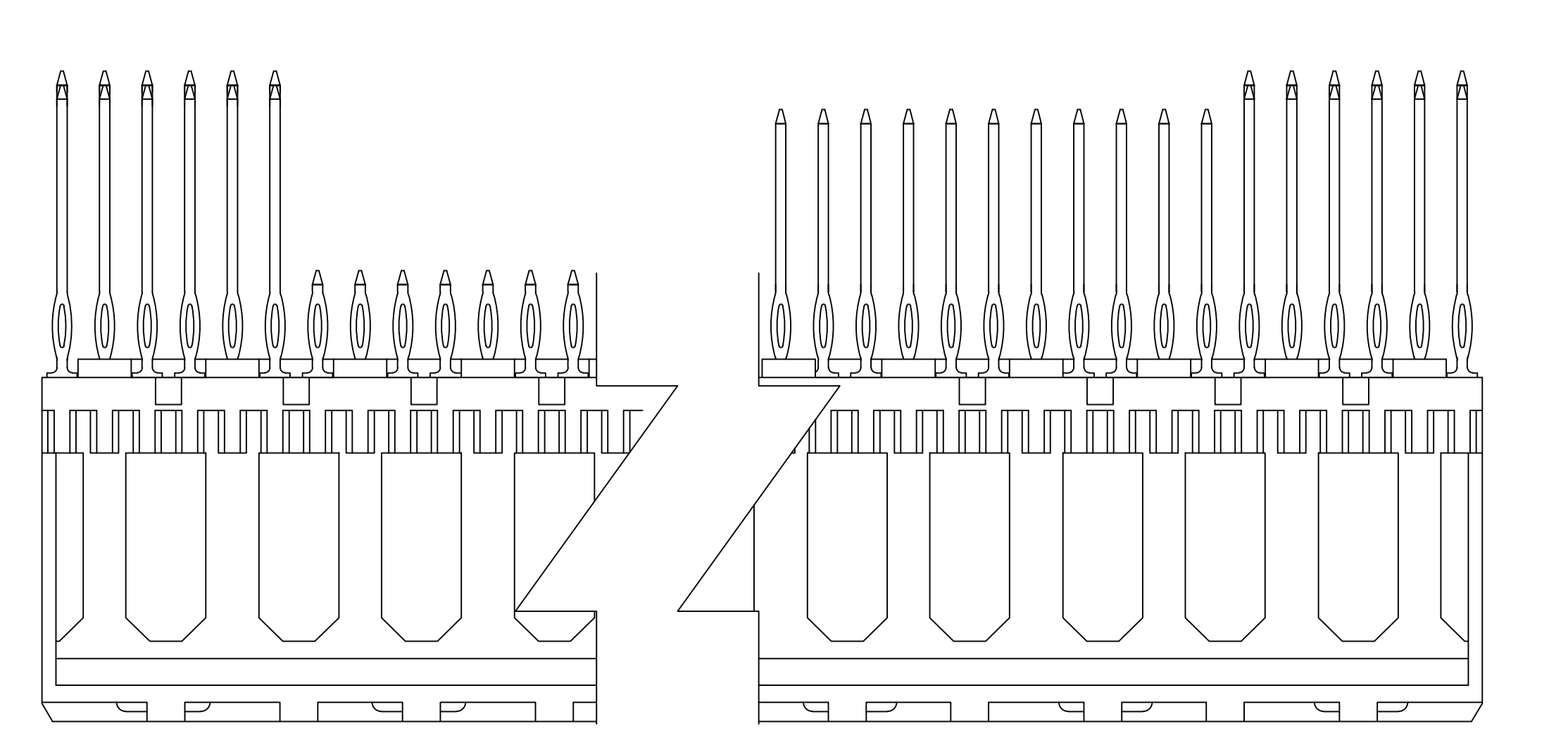
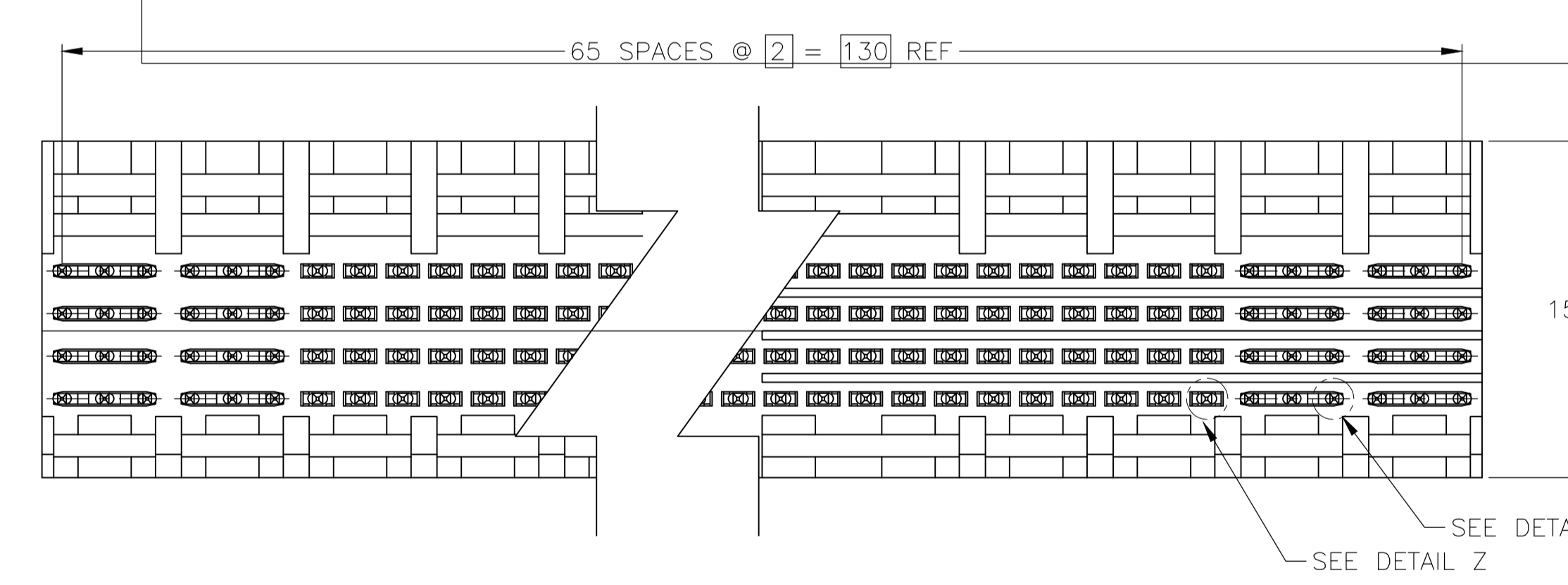
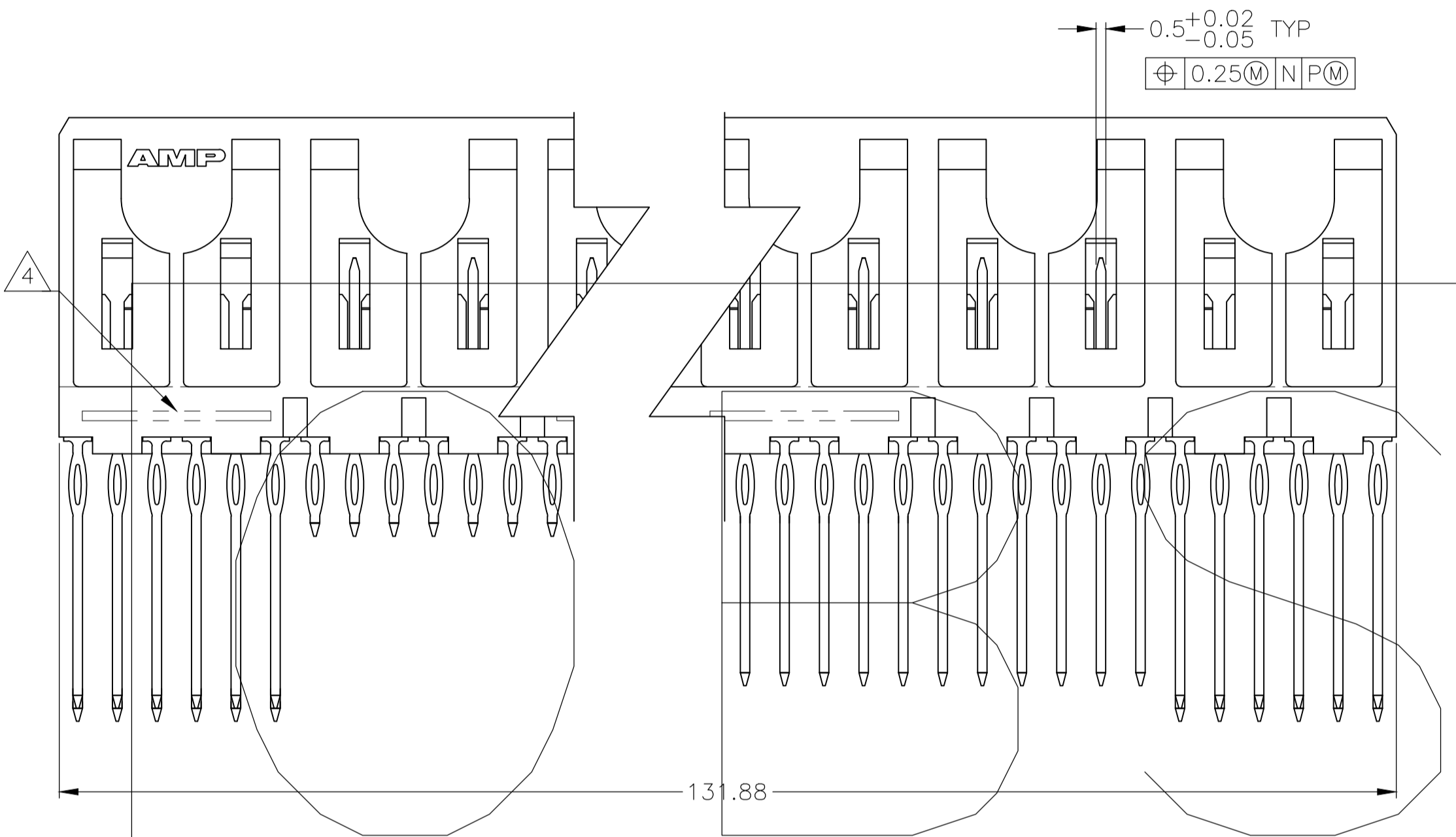
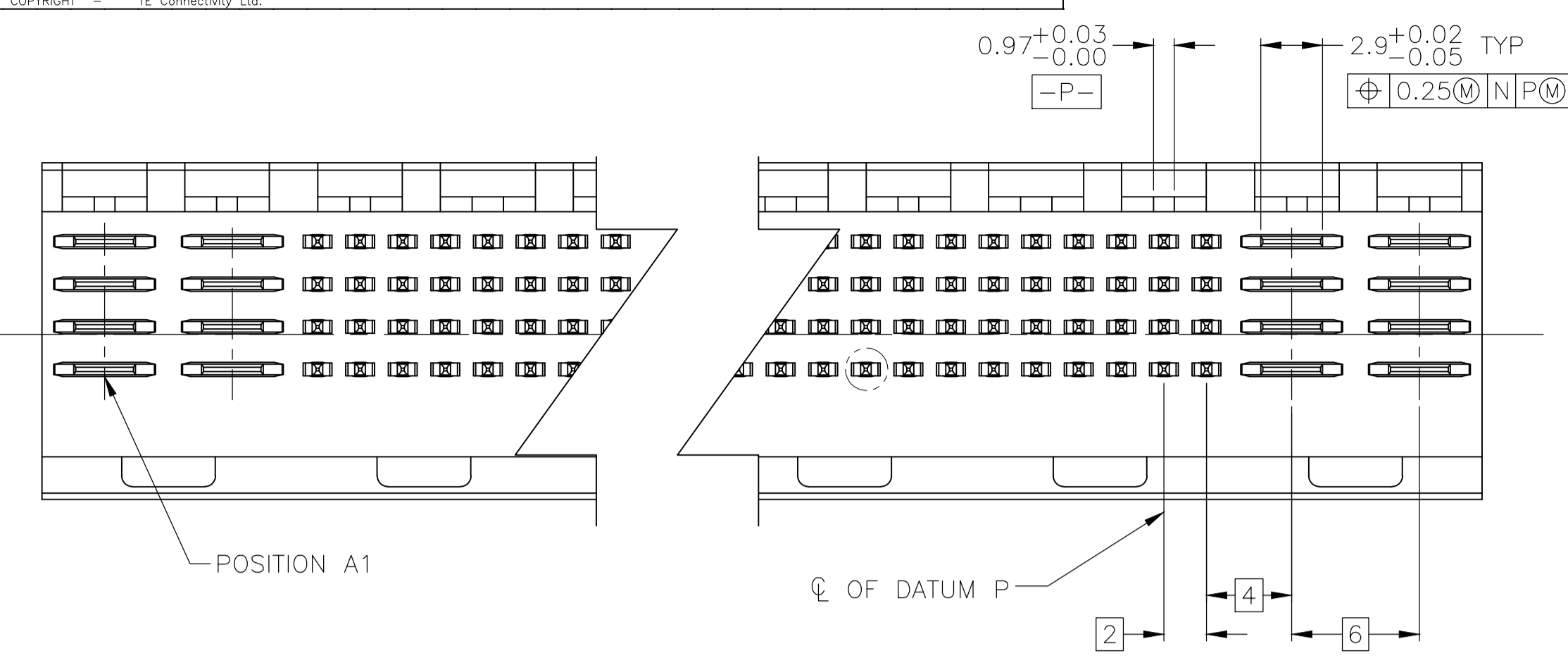
ROW	D	C	B	A
	AF	AF	A	A
	AF	AF	A	A
	AE	AE	A	A
	AF	AF	A	A

POSITION

SEQUENCE FOR 5223166-1

THIS DRAWING IS A CONTROLLED DOCUMENT.		DWN: D. HUMBERT 28SEP2007		TE Connectivity Ltd.
DIMENSIONS: MM		CHK: A. SHARPE 20AUG2007		NAME: A. SHARPE 20AUG2007
TOLERANCES UNLESS OTHERWISE SPECIFIED:		0. PLC ± -	PRODUCT SPEC	
		1. PLC ± -	APPLICATION SPEC	
		2. PLC ± 0.13	SIZE: A1	
		3. PLC ± -	CAGE CODE: 00779	
		4. PLC ± -	DRAWING NO: 5223166	
MATERIAL FINISH		ANGLES	RESTRICTED TO	
		FINISH	CUSTOMER DRAWING	
			SCALE: 4:1 SHEET 1 OF 2 REV C	

REVISIONS				
P	LTR	DESCRIPTION	DATE	APPV
-	-	SEE SHEET 1	-	-



RECOMMENDED CIRCUIT PATTERN
PER IPC-D300 TYPE II, CLASS C
(COMPONENT SIDE)

$\triangle 3$	216	16	5223166-1
FINISH	NO OF SIGNAL POSN	NO OF POWER POSN	PART NUMBER

THIS DRAWING IS A CONTROLLED DOCUMENT.		DIN D. HUMBERT 28SEPT2007	
DIMENSIONS: μm		CIRK A. SHARPE 20AUG2007	
TOLERANCES UNLESS OTHERWISE SPECIFIED:		APVD A. SHARPE 20AUG2007	
0. PLC	± -	NAME	
1. PLC	± -	PRODUCT SPEC	
2. PLC	± 0.13	APPLICATION SPEC	
3. PLC	± -	SIZE CAGE CODE DRAWING NO RESTRICTED TO	
4. PLC	± -	WEIGHT	
ANGLES	± -	A1 00779 C=5223166	
MATERIAL	FINISH	CUSTOMER DRAWING SCALE 4:1 SHEET 2 OF 2 REV C	